



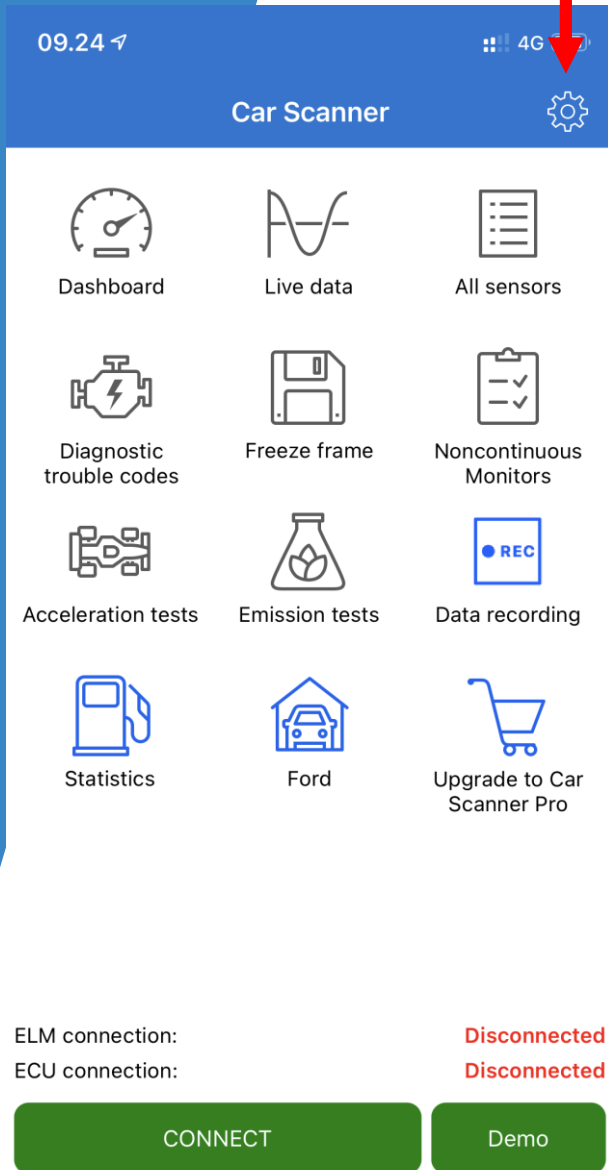
OBD II – Fejlkodelæser

- Mulighed for at læse / slette fejlkoder
- Se realtidsdata som omdrejninger pr. minut, motor temperatur, brændstoftryk, luftstrøm, olietryk, ladetryk, antændelse osv.
- Nem at bruge. OBD donglen tilsluttes nemt bilens OBD-stik, og via Bluetooth er den tilsluttet en smartphone.
- Download en App fra Play Butikken eller App Store. Flere forskellige apps fungerer med enheden. Brug fx "Car Scanner".

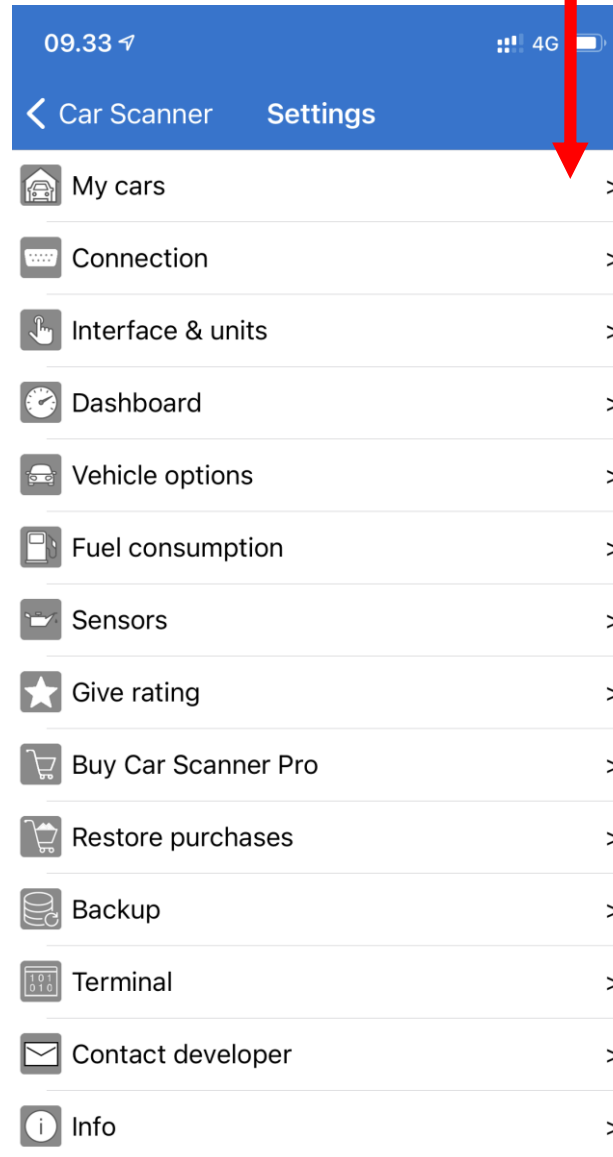
Car Scanner



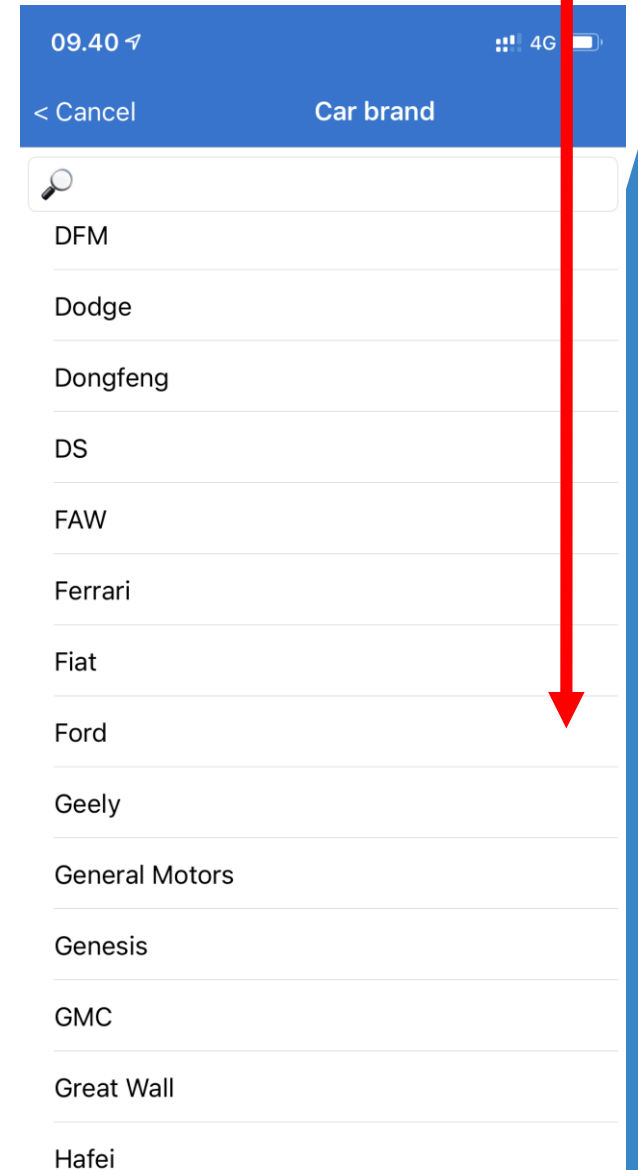
1. Tryk på tandhjulet



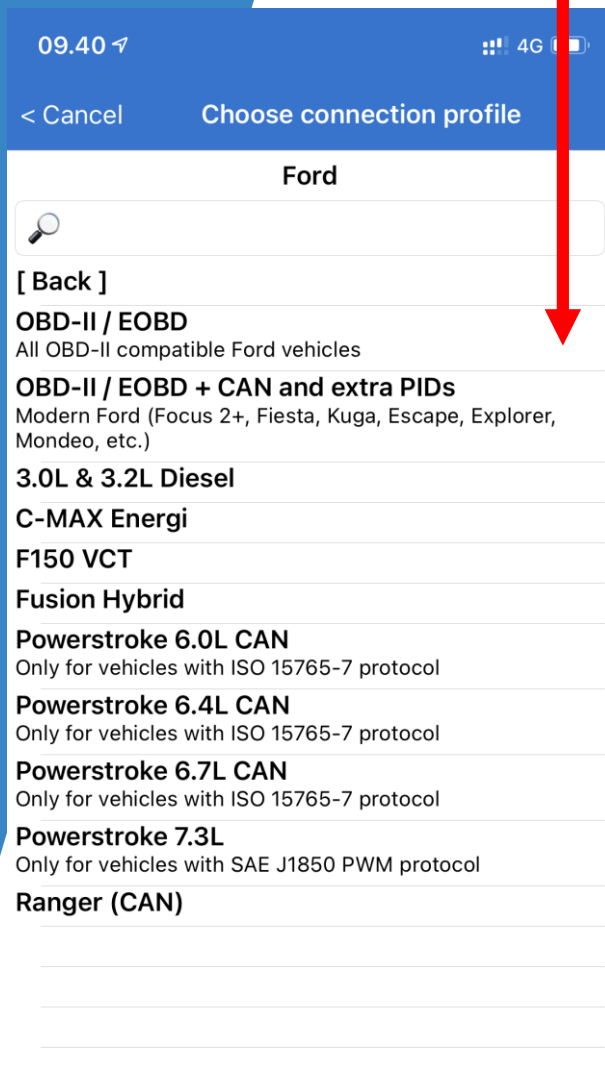
2. Tryk på My Cars



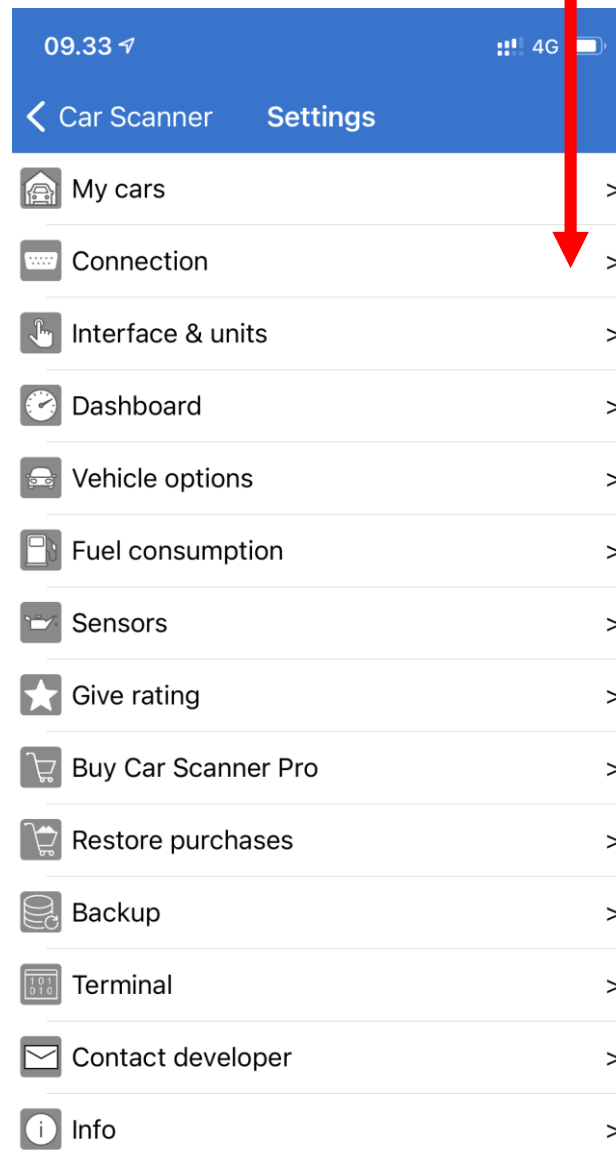
3. Vælg bil mærke



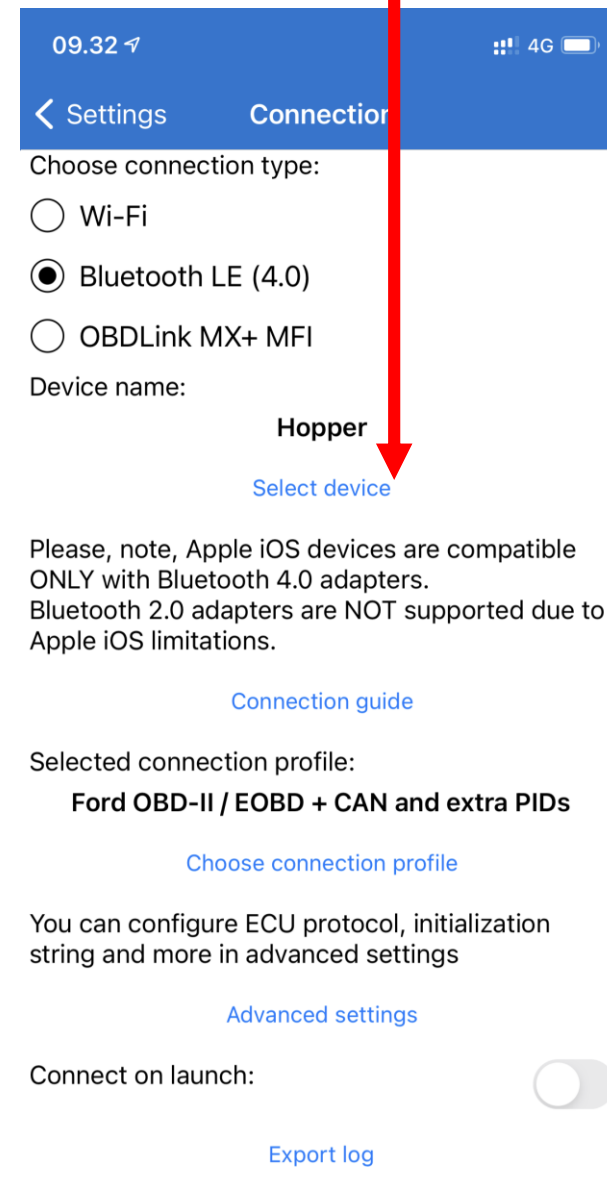
4. Vælg fx OBD-II



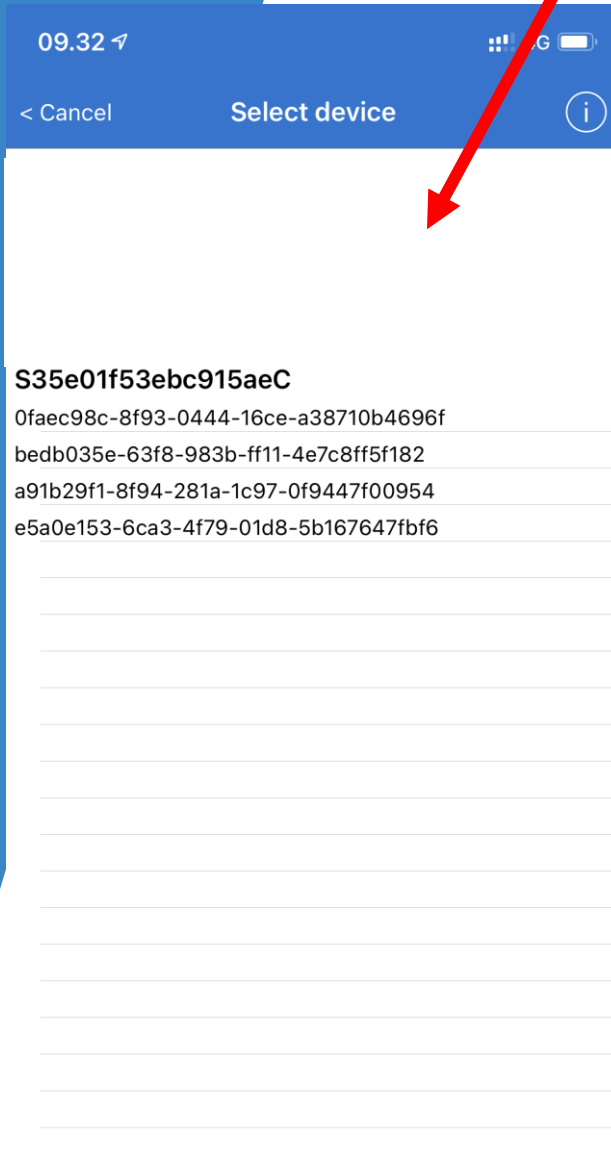
5. Opsæt nu Bluetooth enheden Tryk på "Connections"



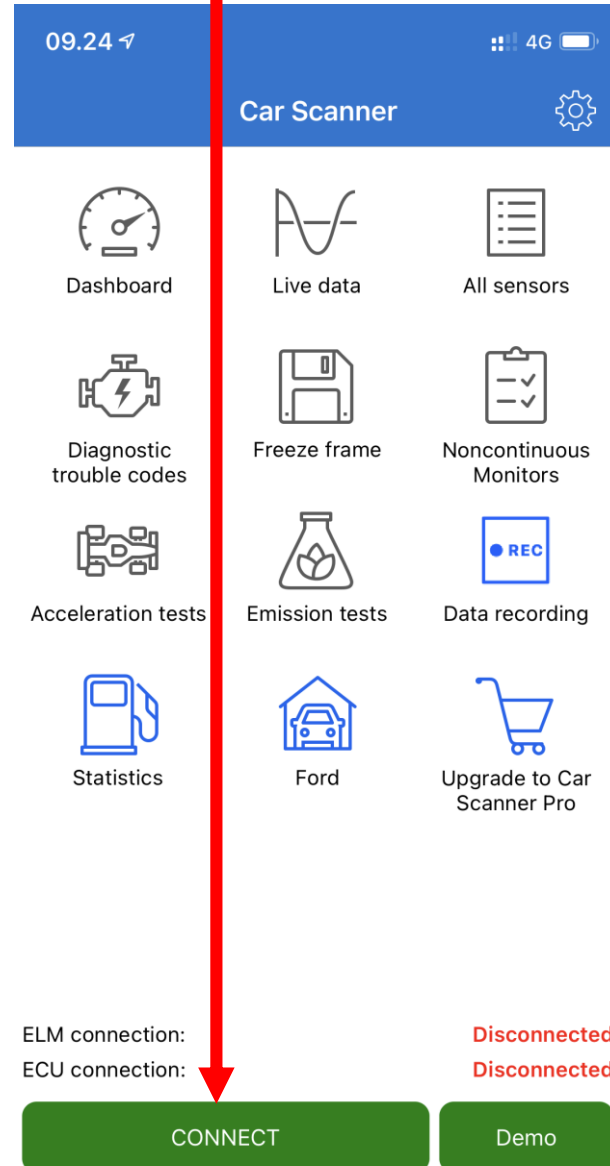
6. Tryk på "Select device"



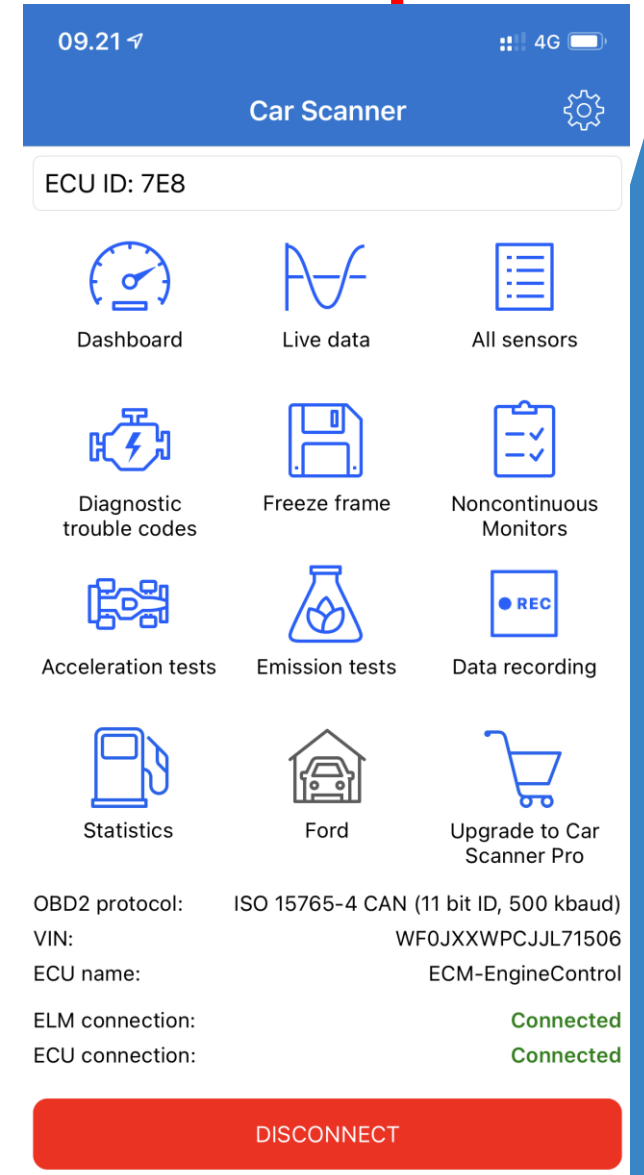
7. Vælg "Hopper" på listen som vises



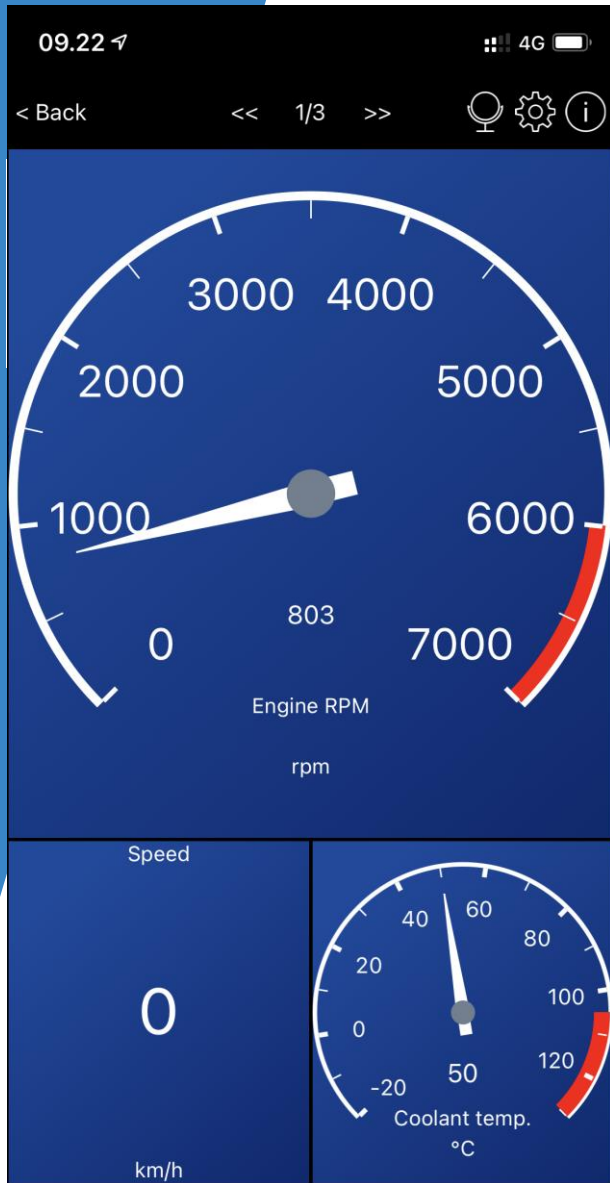
8. Tryk nu på "Connect"



9. Du kan nu se livedate og fejlkoder mm.



Dashboard



Udlæs fejlkoder

09.21 4G

< Back Diagnostic trouble codes [Checkmark] [Close]

Choose modules for reading or clearing:

This list contains all supported modules for selected brand. It's recommended to choose only modules that exists on your car, but you can choose all modules, and Car Scanner would detect units that actually exists on your car.

- OBD-II
- Engine control unit
- Transmission control unit
- ABS/ESP
- Dashboard

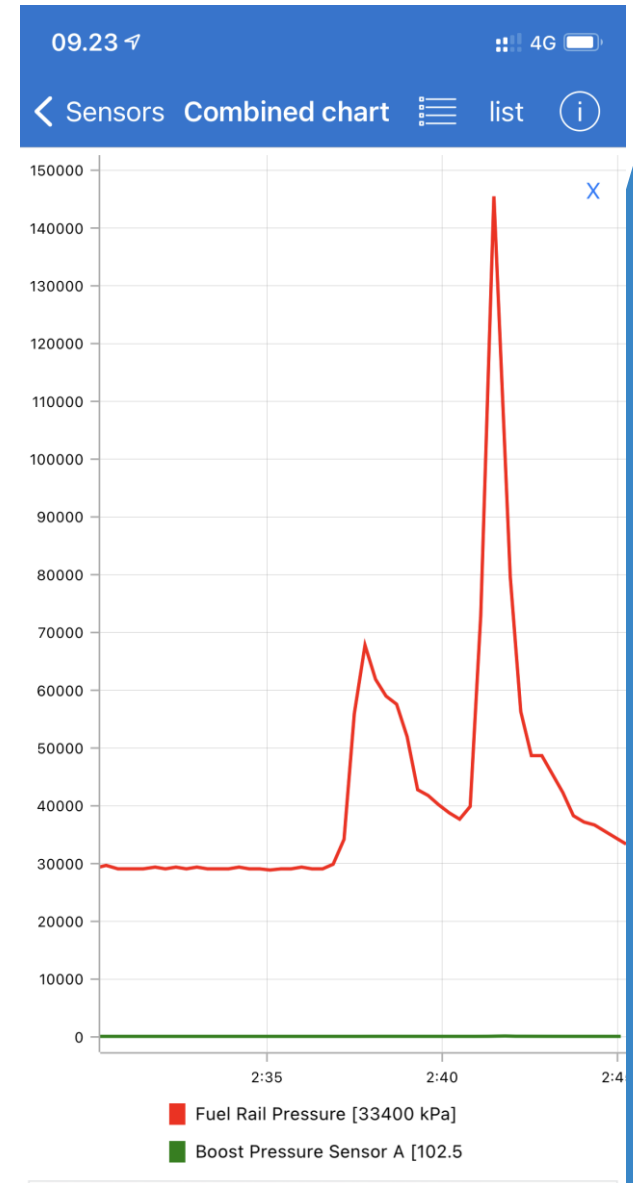
Diagnostic trouble codes display options

- Hide DTC marked as "archive" (not active)
- Hide diagnostic trouble codes with status related to uncompleted tests (these codes don't mean that malfunctions exist in your car)

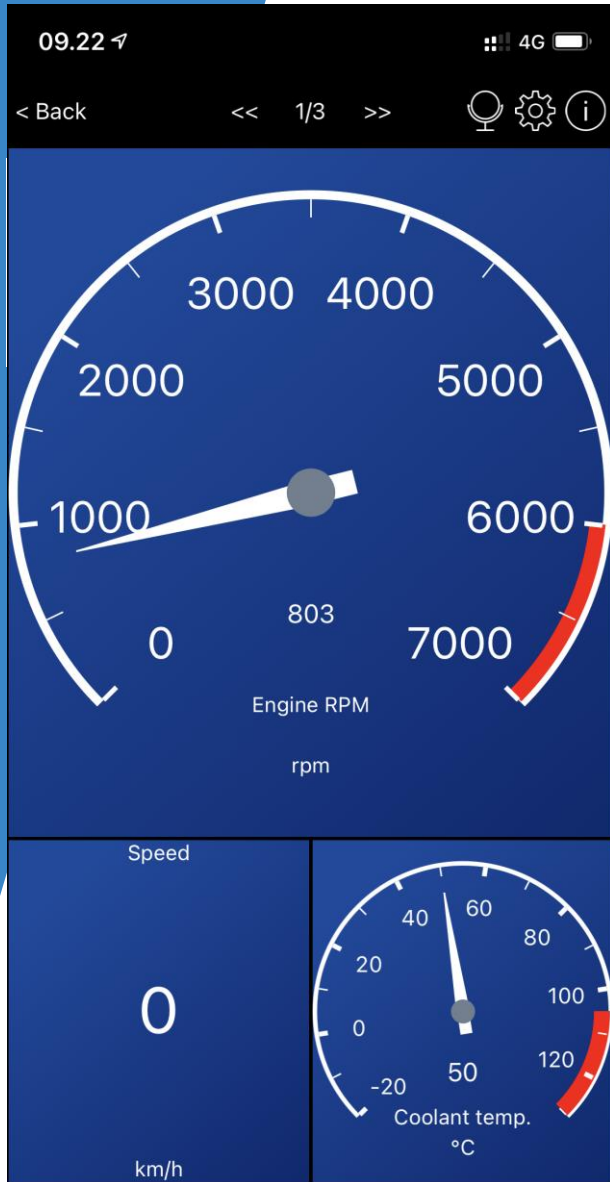
[Switch to old DTC screen](#)

[Read](#) [Clear](#)

Live data



Dashboard



Dashboard



Live data

