

Notice

This is an "i-Size" Child Restraint System. It is approved to Regulation No.129, for use in "i-Size compatible" vehicle seating positions as indicated by vehicle manufacturers in the vehicle users's manual. If in doubt, consult either the child restraint manufacturer or the retailer.

Notice

This is a I-Size booster seat Enhanced Child Restraint System. It is approved according to UN Regulation No.129, for use primarily in "I-Size seating positions" as indicated by vehicle manufacturers in the vehicle user's manual.

If in doubt, consult either the Enhanced Child Restraint System manufacturer or the retailer.

IMPORTANT

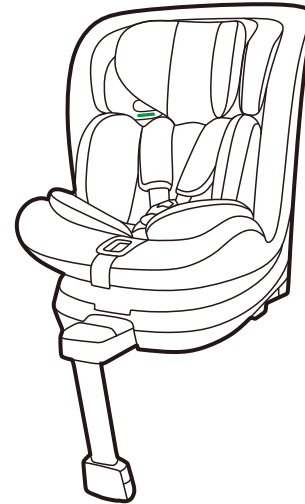
DO NOT USE FOR WARD FACING BEFORE THE CHILD'S AGE EXCEEDS 15 months (Refer to instructions).

Only suitable for use in the listed vehicles fitted with 3 point belt which is approved to ECE Regulation No.16.

Do not use them in seating positions where there is active airbag installed.

I-size WD034

STATURE 40-150CM



The product has been approved according to the strictest European safety standards (ECE R129) and is suitable for 40-150cm Stature

www.nbwelldon.com

Ningbo WellDon Infant And Child Safety Technology Co., Ltd.
No.276 Huangjipu Road, Jiangbei Hi-tech Industrial Zone, Cicheng Town 315000, Ningbo City, Zhejiang Province China (PRC)

Content	1
Introduction	2
Important	3-4
Know your car seat	5-6
Car Seat Version	7
suitability	8
Use in the vehicle	9-10
Securing your baby	11-13
-Using Baby insert.....	11
-Harness&Headrest adjust.....	12
-side impact protection(Optional).....	12
-Change the reclining protections.....	13
Installation in the vehicle	14-15
-Open support leg/Retract support leg.....	14
-Installation instruction for stature 40-105cm,Rear ward facing, ISOFIX+ Support leg.....	15-18
-Installation instruction for stature 76-105cm,Forward facing, ISOFIX+ Support leg+harness.....	19-22
-Installation instruction for stature 100-150cm,Forward facing, ISOFIX attachment+3 point belt.....	23-25
-Installation instruction for stature 100-150cm,Forward facing, 3 point belt.....	26-27
Care in instructions	28-29
-Cleaning.....	28-29
-Security check.....	28
-Warranty.....	29

Dear Parents :

Thank you very much for purchasing our product.

The functions and design of this car seat offer safety and comfort when your child is in this child restraint.

In order to use safely, please adjust the child restraint till it is suitable for your child.

Take care whilst using this car seat and read the manual carefully. Research shows that a high number of car safety seats are incorrectly installed.

Therefore, please take the time to read through the instruction manual carefully.

Our product offers maximum safety only when it is used in accordance with the instructions.

Continuous research by our development team, user tests and consumer reactions ensure that we are kept fully up to date in the field of child safety.

Therefore, if you have any questions concerning use of our product, please do not hesitate to contact us.

You can see our contact information on our website.

WARNING

- Read this instruction manual carefully.
- The correct fitting of the ISOFIX and support leg anchoring systems is of vital importance for the safety of your child.
- Read this instruction manual carefully.

For the future use of the seat, it is important that you keep the instruction manual carefully. There is an instruction storage on the back of the seat where the instruction can be retained with the child restraint.

- Never leave your child unattended in the car.
- Do not use a child safety seat if the vehicle seat is equipped with an front airbag. This can be dangerous. This does not apply to side airbags.
- **IMPORTANT-DO NOT USE FORWARD FACING BEFORE THE CHILD 'S AGE EXCEEDS 15 months.**

- Before use our product, please read the instruction manual carefully, the product is a safety product and is only safe when used in accordance with the instruction manual.
- The product must only be used on a forward facing seat that is fitted with the ISOFIX and support leg anchoring systems.
- The product may be used on either the front or the back seat. However, we recommend that it is fitted on the back seat.
- The product has been approved according to the strictest European safety standards (R129/03) and is for stature 40-105cm (child mass limit 18kg), Rearward facing, ISOFIX+Support Leg+Harness and is for stature 76-105cm (child mass limit 18kg), Forward facing, ISOFIX+Support Leg+Harness and is for stature 100-150cm, Forward facing, ISOFIX attachment +Vehicle 3 point belt and is for 100-150cm, Forward facing Vehicle 3 point belt.
- After an accident the seat may become unsafe due to damage that is not noticeable immediately. It should therefore be replaced.
- The safety of the seat can only be guaranteed by the manufacturer if it is issued by the original owner.
- We advise you strongly that not to use a second-hand product, because you are not sure if it is in good condition.
- The harness pads and crotch pad are important for the safety of your child, therefore use them for stature 40-105cm.
- Ensure that all luggage and objects likely to cause injury in the event of an accident are properly secured.

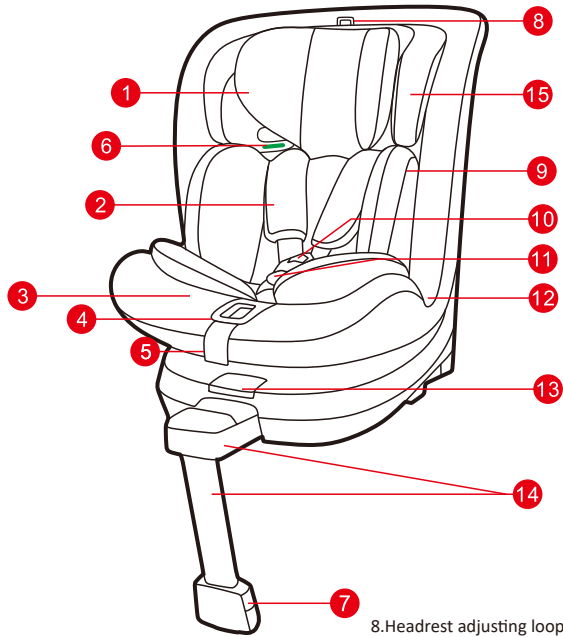
- Do not use this child seat in passenger seats are equipped with airbags.
- It is recommended that the car seats should not be used more than 5 years from the date of production. The properties of the products may deteriorate due to, for example, ageing of the plastic and this may not be visible.
- The baby car seat must not be used without the cover. Please use an original cover, as the cover contributes to the safety of the seat.
- The seat must be secured with a seat belt or ISOFIX and support leg, even when it is not on use. An unsecured seat may injure other passengers in the car in an urgent stop.
- The rigid items and plastic parts of a child restraint must be located and installed that they are not liable, during everyday use of vehicle, to become trapped by a movable seat or in door of the vehicle.
- Ensure that the seat is not damaged by heavy luggage, adjustable seats or slamming the car door etc.
- No alterations may be made to the product as this could affect part or the overall safety of the seat.
- In hot weather the plastic and metal parts of the product will be hot. You should cover the seat when the car is parked under the sun.
- In order to prevent damage to the cover, do not remove the product's logo.
- Before the purchase, please check that the seat is properly secured in your car.
- Take a short break in long journey. So that your child has some time for relaxation.
- Set a good example yourself and always wear your seat belts.
- Tell your child that he/she should never play with the harness buckle.
- Any straps holding the restraint to the vehicle should be tight, that any straps restraining the child should be adjusted to the child's body, and that straps should not be twisted.
- Ensuring that any lap strap is worn low down, so the pelvis is firmly engaged.
- This product can not be used any more when it has been subject to violent stresses in an accident.
- Children can not be left in the product unattended.

Questions

Contact your supplier or retailer if you wish to make a warranty claim or have any other questions.

Your car seat can be fixed safely on almost seats of the cars. However, some seats the belts are fixed so that proper installation is not possible, in that case, try another seat.

Know your car seat



1.Headrest

2.Shoulder pads

3.Shoulder strap

4.Harness adjusting button

5.Harness adjusting strap

6.Belt guide

7.Support leg indicator

8.Headrest adjusting loop

9.Inner cushion

10.Harness Buckle

11.Crotch pad

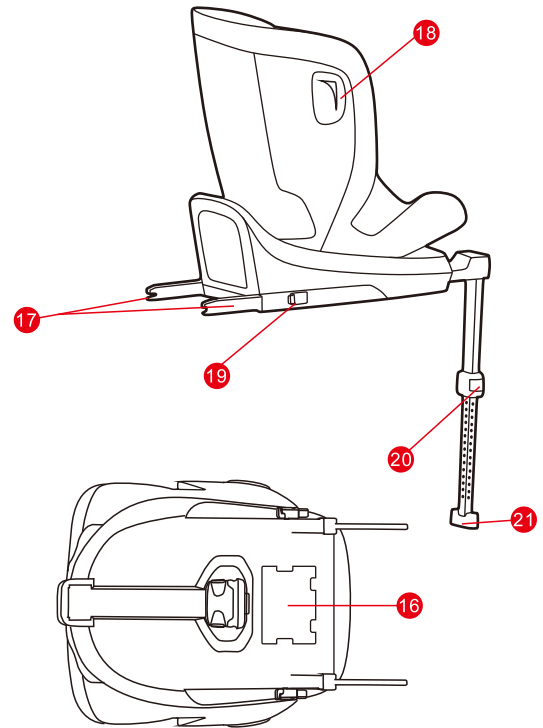
12.Base

13.Rotating button

14.Support leg1

15.head cushion

Know your car seat



16.Instruction storage

17.ISOFIX connector

18.Small flank body

19.ISOFIX Release button

20.Support leg adjusting button

21.Supportleg block

1. Product description:

Type	Stature	Facing direction	Installation	Approval type
WD034	40-105cm	Rearward	ISOFIX + Support Leg + harness	I-SIZE
	76-105cm	Forward	ISOFIX + Support Leg + harness	
	100-150cm	Forward	Vehicle 3point belt+ ISOFIX attachment	I-SIZE BoosterSeat
Vehicle 3point belt				

- Always secure your baby in the car seat using the harness or belts.. Never leave your baby unattended in the car seat when placing it on elevated surfaces (e.g. a table, nappy changing unit, etc.).
 - Never allow the strap end to become caught in moving parts(e.g.automatic doors, escalators, etc.).
 - Caution!The plastic parts of the car seat heat up in the sun, so that your baby may get burnt.
 - Protect your baby and the car seat against intensive solar radiation (e.g. by putting a light cloth over the seat).
- Protect your baby and the car seat against intensive solar radiation (e.g. by putting a light cloth over the seat).
- Take your baby out of the car seat so often as possible to relieve its spine. We recommend frequent breaks during long journeys. Even outside of the car, please avoid leaving your baby in the car seat for too long.

2. Certification



...as a child safety seat installed in vehicle

WELLDON child safety seat	Tested and certified according to ECE R129			
	Stature	Rearward	Forward	Forward
WD034	40-105cm	76-105cm	100-150cm	

*ECE = European Standard for Safety Equipment

The child safety seat has been designed, tested and certified according to the requirements of the European Standard for Child Safety Equipment (ECE R129/03).


The seal of approval E (in a circle) and the approval number are located on the approval label (sticker on the child safety seat).

The child safety seat has been designed, tested and certified according to the requirements of the European Standard for Child Safety Equipment (ECE R129/03).

This approval will be invalidated if you make any modifications to the child safety seat. Only the manufacturer is permitted to make modifications to the child safety seat.

3. Use in the vehicle

WARNING

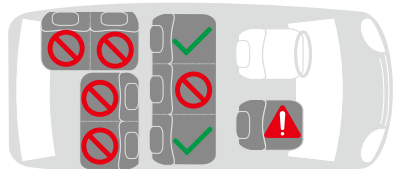
 Never use this child restraint system in seating positions where an active airbag is installed.

An active frontal airbag may cause death or serious injury of your child in an accident. Please read the instructions carefully and keep safely for future reference.

There is an instructions compartment in the back of the child car seat for storage of the instructions manual.



You can use your child car seat as follows:



- On front passenger seat

 Yes

Only if there's no airbag or it is turned off! There must be an ISOFIX system. (Slide the seat back and refer to vehicle instructions).

WARNING

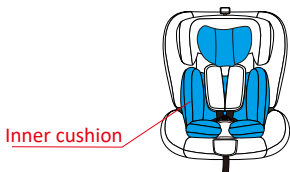
Never use the child car seat without its fabric cover. The fabric cover should not be replaced with any other than the ones recommended by manufacturer. The fabric cover will affect the integral performance of the baby/child restraint system. Never try any other force points than the indicated, the main force points of this product are the ISOFIX adapter and the support leg.

4. Securing your baby

4.1 Using Baby Insert

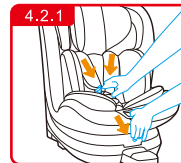
If your baby's stature is $\leq 75\text{cm}$, please install the Inner cushion on baby car seat.

If your baby's stature is $75 < X \leq 150\text{cm}$, Please take out the Inner cushion baby car seat.



4.2 Harness system & Headrest adjust

Loosen the shoulder straps by pressing the harness adjusting button and pull the shoulder straps as far forward as possible.



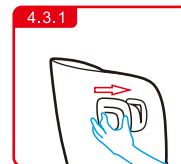
Pull the headrest adjusting loop to adjust the headrest upwards, pull the headrest adjusting loop and push the headrest back to slide the headrest downwards.



- Pull the headrest adjusting loop to adjust the headrest upwards, pull the headrest adjusting loop and push the headrest back to slide the headrest downwards.
- There are 12 adjustable headrest positions. Please adjust the headrest height to close to your baby/child shoulder position, if at the middle of two positions, please use the higher position.

4.3 Side impact protection (Optional)

Install the side protector on the small flank body, slide forward until to hear "click" sound (Pic.4.3.1), Note: when side impact protection used, maybe not fit all vehicles.



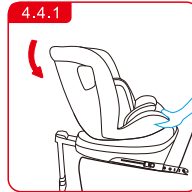
Securing your baby

4.4 To change the reclining positions

There are 5 recline positions of this product. To change the position, grasp the lever at the front of the seat, push or pull the seat into the desired position until you hear an audible sound "click".

Rearward facing adjust

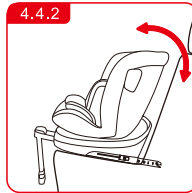
-For stature 40-105cm rearward facing position



Forward facing adjust

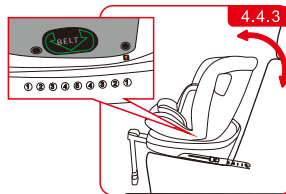
-The reclining positions can be adjusted for forward facing using with stature 76-105cm .

-The reclining position 4 and 5 do not apply for all vehicles.



Forward facing adjust

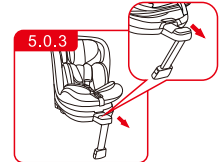
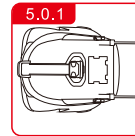
If the child is between 100 and 150cm tall and is secured by a three-point harness, it should only be used in an upright position. When the arrow label is aligned with the mounting label position (1), the seat is in an upright position.



Installation in the vehicle

5. Open support leg

First, remove the supporting leg from the bottom of the seat. When the supporting leg is rotated outward to 45°, the supporting leg assembly can be pulled out outward.

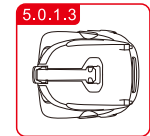
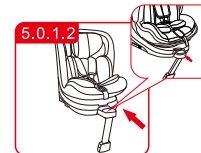


CAUTION

The seat can only be rotated when the supporting leg assembly is extended.

5.0.1 Retract support leg

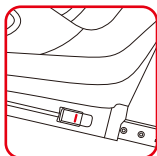
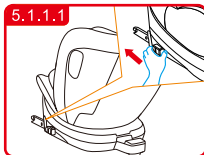
Rotate the support leg backward to 45° and push the support leg assembly inward until it is fully in place. Finally, tuck the support leg into the slot at the bottom of the seat.



Installation in the vehicle

5.1 Installation instruction for STATURE 40-105cm,Rearward facing , ISOFIX + Support Leg + harness.

Unfold support leg until it locks in place.Press the ISOFIX release button to slide the ISOFIX connectors to the end.



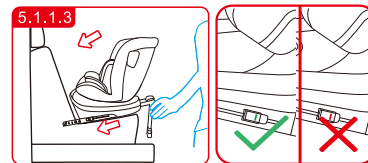
Caution: Please only move to next step when ISOFIX has been slid to the end with appearing the red marks.

Push the ISOFIX connectors directly into the anchorages until you hear an audible sound "click"

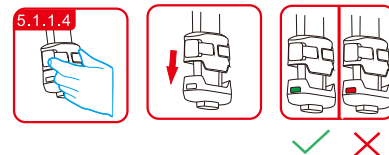


Installation in the vehicle

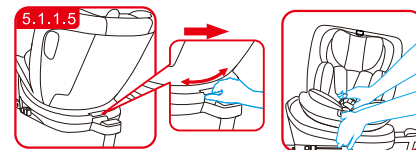
Grasp the seat body to check theseat if it is fastened tightly orshakes, meanwhile observe theISOFIX red/green indicator. If theseat shakes and the ISOFIX connectors are pulled out, pleaserepeat the above steps and install it again.



Squeeze the supportleg adjusting button, pull out thesupport leg until it rests firmlyon the floor. Observe the ISOFIX red/green indicator toconfirm the installation status



Press the rotatingbutton, adjust theseat to sidewardfacing position allowaccess for placing achild from the seatunit after the carseat is fitted.



CAUTION

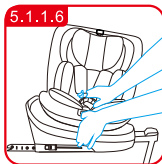
Before every journey, make sure that the rotating part has been fully engaged.
Do not drive unless the seat is in forward or rearward facing position.

CAUTION

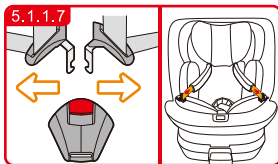
The seat can be 360°rotated without limiting(Any angles).

Installation in the vehicle

Loosen the shoulder straps by pressing the harness adjusting button and pull the harness shoulder as far forward as possible.



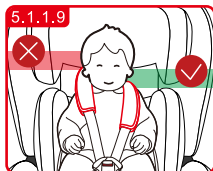
Open the buckle by pressing the red button, then fix the shoulder straps at the sides of the car seat.



Place child in the car seat.

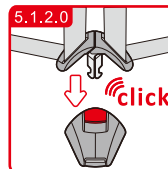


Please note a correctly adjust headrest ensures optimal protection for your child in the safety seat; the headrest must be adjusted so that the shoulder straps are at the same level as your child's shoulders or slightly above.

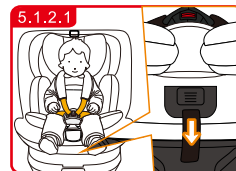


Installation in the vehicle

Guide the two buckle latches together and engage them before putting them into the buckle, this should make a clicking sound.



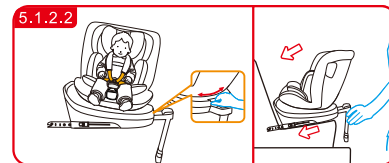
Tighten the harness adjusting strap and make sure the harness is reasonably tight. It should restrain but not make the child uncomfortable.



CAUTION Please ensure that the lap strap is worn low down, so that the pelvis is firmly engaged. Pull on the strap until it lies flat and is close against your child's body. The straps should be correctly adjusted and ensure they are not twisted.

CAUTION Pull the strap end straight towards you, not upwards or downward. Please pay attention to the strap end. Whilst travelling (especially outside the car) it should always be attached to the cover.

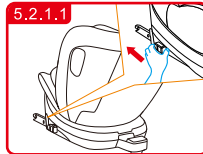
Press the rotating button to adjust the seat direction. Only rearward facing position is available for child 15 months.



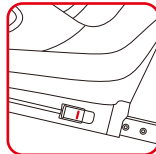
Installation in the vehicle

5.2 Installation instruction for Stature 76-105cm, Forward facing , ISOFIX+ Support Leg+ harness.

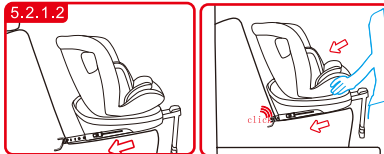
Loosen the shoulder straps by pressing the harness adjusting button and pull the harness shoulder as far forward as possible.



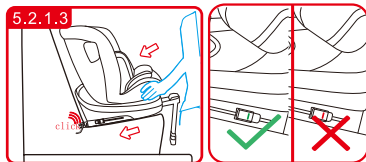
Caution: Please only move to next step when ISOFIX has been slid to the end with appearing the red marks.



Push the ISOFIX connectors directly into the anchorages until you hear an audible sound "click"

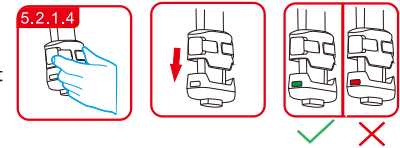


Grasp the seat body to check if it is fastened tightly or shakes, meanwhile observe the ISOFIX red/green indicator. If the seat shakes and the ISOFIX indicator is red, grasp the seat body to check if it is fastened tightly or shakes, meanwhile observe the ISOFIX red/green indicator. If the seat shakes and the ISOFIX indicator is green, install again.

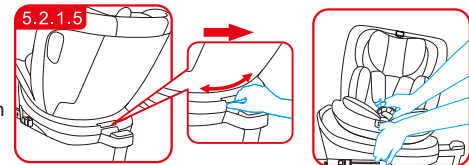


Installation in the vehicle

Squeeze the support leg adjusting button, pull out the support leg until it rests firmly on the floor. Observe the adjusting button, pull out the support leg until it rests firmly on the floor. Observe the



Press the rotating button, adjust the seat to sideward facing position to allow access for placing a child from the seat unit after the car seat is fitted.



CAUTION

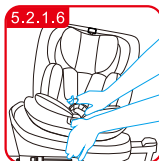
Before every journey, make sure that the rotating part has been fully engaged. Do not drive unless the seat is in forward or rearward facing position.

CAUTION

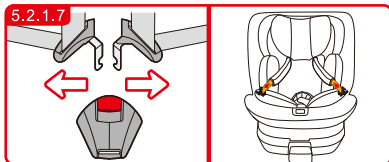
The seat can be 360° rotated without limiting (Any angles).

Installation in the vehicle

Unfold support leg until it locks in place. Press the ISOFIX release button to slide the ISOFIX connectors to the end.



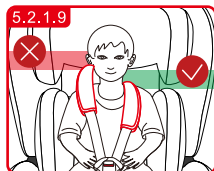
Open the buckle by pressing the red button, then fix the shoulder straps at the sides of the car seat.



Place child in the car seat.

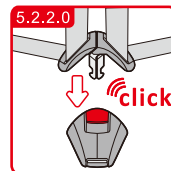


Please note a correctly adjust headrest ensures optimal protection for your child in the safety seat; the headrest must be adjusted so that the shoulder straps are at the same level as your child's shoulders or slightly above.

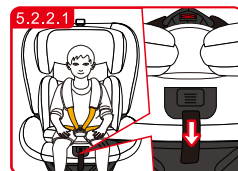


Installation in the vehicle

Guide the two buckle latches together and engage them before putting them into the buckle, this should make a clicking sound.



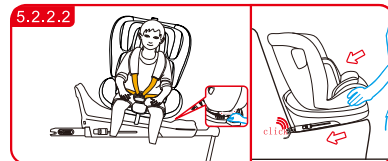
Tighten the harness adjusting strap and make sure the harness is reasonably tight. It should restrain but not make the child uncomfortable.



CAUTION Please ensure that the lap strap is worn low down, so that the pelvis is firmly engaged. Pull on the strap until it lies flat and is close against your child's body. The straps should be correctly adjusted and ensure they are not twisted.

CAUTION Pull the strap end straight towards you, not upwards or downward. Please pay attention to the strap end. Whilst travelling (especially outside the car) it should always be attached to the cover.

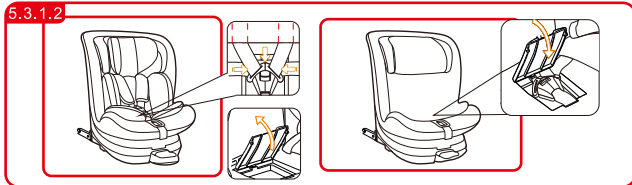
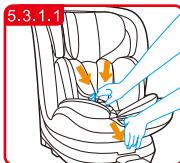
Press the rotating button to adjust the seat to adjust the seat direction. Only rearward facing position is available for child 15 months.



Installation in the vehicle

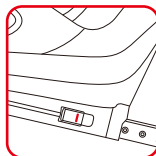
5.3 Installation instruction for Stature 100-150cm, Forwardfacing, ISOFIX attachment+Vehicle 3 point belt.

Remove the baby insert, loosen the shoulder straps by pressing the harness adjusting button and pull the harness shoulder as far forward as possible.



Place the shoulder strap behind the headrest cover, open the cover of buckle storage, assemble the buckle properly, then put it in the storage and close finally.

Unfold support leg until it locks in place. Press the ISOFIX release button to slide the ISOFIX connectors to the end. Support leg must be fully storage, refer to 5.0.1.



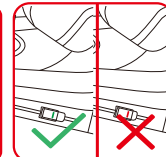
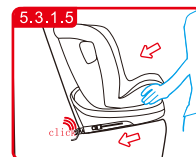
Caution: Please only move to next step when ISOFIX has been slid to the end with appearing the red marks.

Installation in the vehicle

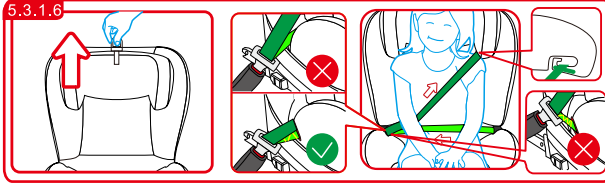
Push the ISOFIX connectors directly into the anchorages until you hear an audible sound "click"



Grasp the seat body to check the seat if it is fastened tightly or shakes, meanwhile observe the ISOFIX red/green indicator. If the seat shakes and the ISOFIX connectors are pulled out, please repeat the above steps and install it again.



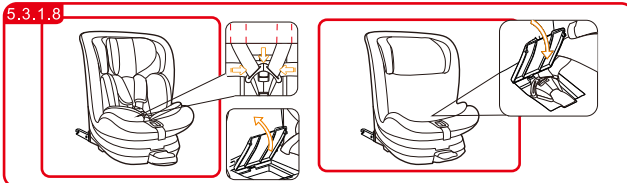
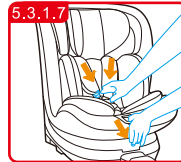
Installation in the vehicle



Adjust the height of the headrest to suit your child. Put the vehicle belt through the belt guide. Place your child into the baby car seat and let the vehicle belt pass the belt guide. Fasten the vehicle belt with an audible sound "click".

CAUTION Make sure lap strap lap is worn low down, so that the pelvis is firmly engaged. Pull on the strap until it lies flat and is close against your child's body. The straps should be correctly adjusted and ensure they are not twisted.

Remove the baby insert, loosen the shoulder straps by pressing the harness adjusting button and pull the harness shoulder as far forward as possible.

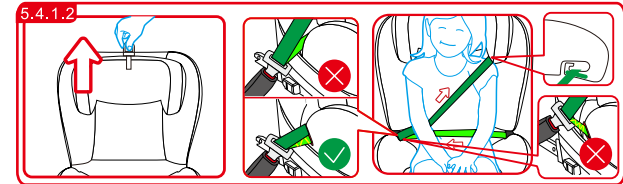


Place the shoulder strap behind the headrest cover, open the cover of buckle storage, assemble the buckle properly, then put it in the storage and close finally.

Installation in the vehicle

5.4 Installation instruction for Stature 100-150cm, Forwardfacing, Vehicle 3 point belt.

Put the safety seat on the car, Support leg must be fully storage, refer to 5.0.1.



Adjust the height of the headrest to suit your child. Put the vehicle belt through the belt guide. Place your child into the baby car seat and let the vehicle belt pass the belt guide. Fasten the vehicle belt with an audible sound "click".

CAUTION Make sure lap strap lap is worn low down, so that the pelvis is firmly engaged. Pull on the strap until it lies flat and is close against your child's body. The straps should be correctly adjusted and ensure they are not twisted.

CAUTION

This unit should be used in a forward upright position only.

CAUTION

The seat can only be rotated when the supporting leg assembly is extended.

CAUTION

Before every journey, make sure that the rotating part has been fully engaged.
Do not drive unless the seat is in forward or rearward facing position.

CAUTION

The seat can be 360° rotated without limiting (Any angles).

6.1 Cleaning

Adjust the height of the headrest to suit your child. Put the vehicle belt through the belt guide. Place your child into the baby car seat and let the vehicle belt pass the belt guide. Fasten the vehicle belt with an audible sound "click".

The baby car seat must not be used without the cover.

The cover can be removed and washed circularly in a washing at 30°C in the neutral detergent.

But please read the washing label on the cover carefully before washing. As the color of the cover may fade is washed above 30°C. Wringing or ironing the cover is forbidden (as the fabric may separate from the padding).

The plastic part of the seat can be cleaned with soapy water. Do not use the strong detergents

6.2 Security check

For security, please read this "security check" before your travelling. Check if the firmness of the shoulder strap system is suitable for your child, and if the height of the shoulder strap is with the proper height.

Regularly check the 5-point harness belt of the seat to ensure no damage. In case of any damage or malfunction, please do not use the baby car seat and contact your supplier (see the address information in the warranty card). If you have any question, please contact the supplier.

Care instructions

6.3 Warranty

The warranty period starts from the purchase date and is valid for a period of 12 months.

The warranty is only applicable to the original owner and is not transferable.

The warranty is only applicable to products which have not been modified by the user.

In the case of any defects, the owner is required to return the product to the retailer.

If the retailer can't solve the problem, he must return the product, complete with a clear description of the complaint and a validated purchase receipt to the manufacturer.

The product will not be replaced or returned.

Repairs do not constitute an extension to the warranty term.

No warranty given if:

The product is not supplied completely with the validated purchase receipt to the manufacturer.

Defects are caused by misuse or maintenance which differs from that indicated in the instruction manual.

Repairs are carried out by third parties.

Defects are caused by neglect.

Damage or removal of any serial number is found.

If there is normal wear and tear which may be expected in daily use.

The stated warranty terms and conditions have not been satisfied.

6.3 Warranty

In the case of any defects, the owner is required to return the product to the retailer.

The warranty is only applicable to the original owner and is not transferable. The warranty is only applicable to products which have not been modified by the user.

In the case of any defects, the owner is required to return the product to the retailer.

If the retailer can't solve the problem, he must return the product, completely with a clear description of the complaint and a validated purchase receipt to the manufacturer.

The product will not be replaced or returned.

Repairs do not constitute an extension to the warranty term.

No warranty given if:

The product is not supplied completely with the validated purchase receipt to the manufacturer.

Defects are caused by misuse or maintenance which differs from that indicated in the instruction manual.

Repairs are carried out by third parties.

Defects are caused by neglect.

Damage or removal of any serial number is found.

If there is normal wear and tear which may be expected in daily use. The stated warranty terms and conditions have not been satisfied.