

**APPLICATIONS**  
**Toyota Venza**  
**2009**

**CT23TY17**

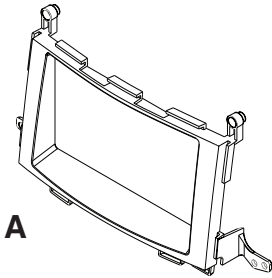
**KIT FEATURES**

- Double DIN Head Unit Provision
- Stacked ISO DIN Head Unit Provision



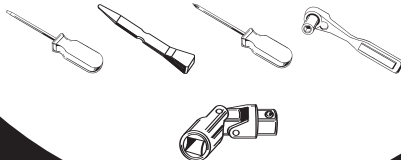
**KIT COMPONENTS**

- A) DDIN Trim Plate



**TOOLS REQUIRED:**

- Small Flat Blade Screwdriver/ Panel Removal Tool
- Phillips Screwdriver
- Socket Set
- Magnetized Universal Swivel Head Socket Adapter



# **TABLE OF CONTENTS**

## **Dash Disassembly**

**- Toyota Venza 2009 ..... 1**

## **Kit Assembly**

**- Double DIN Head Unit/Stacked ISO Din Head Unit Provision ..... 2**

### **\*Note:**

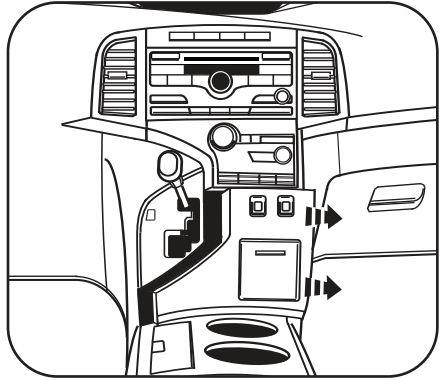
**Refer also to the instructions included with the aftermarket radio.**

# Toyota Venza 2009

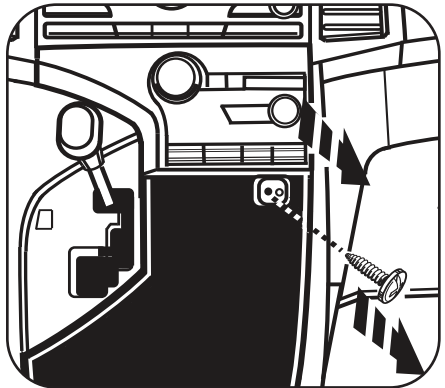
- 1 Disconnect the negative battery terminal to prevent an accidental short circuit.
- 2 Unclip and remove the trim panel to the right of the shifter. (Figure A)
- 3 Remove (1) Phillips screw from the bottom of the climate control then unclip and remove the climate control. (Figure B)
- 4 Remove (4) 10 MM bolts securing the radio. **Note: You will need a universal swivel head socket adapter to get to the bottom left bolt.** (Figure C)
- 5 Remove (4) Phillips screws securing the factory radio to the a/c vent panel. (Figure D)

Continue to kit assembly.

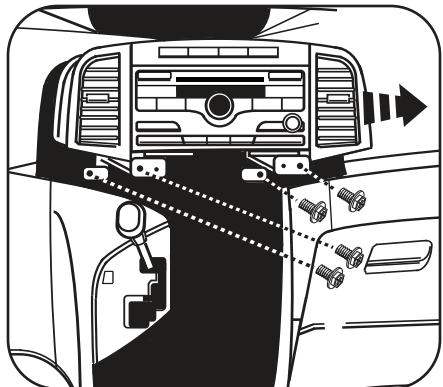
A



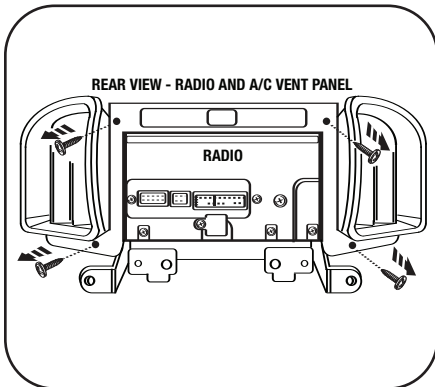
B



C



D



## DOUBLE DIN HEAD UNIT PROVISION/ STACKED ISO DIN HEAD UNIT PROVISION

*\*Note: Refer also to the instructions included with the aftermarket radio.*

- 1 Secure the DDIN Trim plate into the factory a/c vent panel using the factory hardware. (Figure A)
- 2 Attach the factory radio brackets to the DDIN head unit or the stacked ISO DIN head units with the screws supplied with the unit. (Figure B)
- 3 Locate the factory wiring harness in the dash. Metra recommends using the proper mating adapter from Metra or AXCESS. Re-connect the negative battery terminal and test the unit for proper operation.
- 4 Secure the aftermarket radio into the dash using (4) 10 MM bolts. (Figure C)
- 5 Snap the factory vent panel/DDIN trim plate over radio. (Figure D)
- 6 Reassemble the remaining radio and dash assemblies in reverse order of disassembly.

