

## **TV-Free** Video-in-motion Interface

### **CTVIMVW02**

**for Volkswagen MFD3/RNS510,  
Skoda Columbus  
and Seat Trinax  
navigation systems**

#### **Legal Information**

By law, watching moving pictures while driving is prohibited, the driver must not be distracted. We do not accept any liability for material damage or personal injury resulting, directly or indirectly, from installation or operation of this product. This product should only be used while standing or to display fixed menus or rear-view-camera video when the vehicle is moving, for example the MP3 menu for DVD upgrades.

## Contents

### 1. Prior to installation

- 1.1. Delivery contents
- 1.2. Check compatibility of vehicle and accessories
- 1.3. Setting the Dip-switches
- 1.4. Pin-assignments

### 2. Installation

### 3. Activation of the video-in-motion function

### 4. Specifications

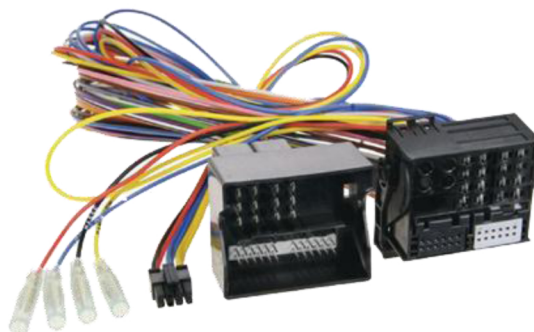
## 1. Prior to installation

Read the manual prior to installation. Technical knowledge is necessary for installation. The place of installation must be free of moisture and away from heat sources.

### 1.1. Delivery contents

*Take down the SW-version and HW-version of the interface boxes, and store this manual for support purposes.*

HW \_\_\_\_\_ SW \_\_\_\_\_



## 1.2. Check compatibility of vehicle and accessories

Requirements	
Vehicle	Volkswagen, Seat, Skoda and Bentley Continental GT
Navigation	MFD3/RNS510, Trinox or Columbus navigation systems

## 1.3. Setting the Dip-switches

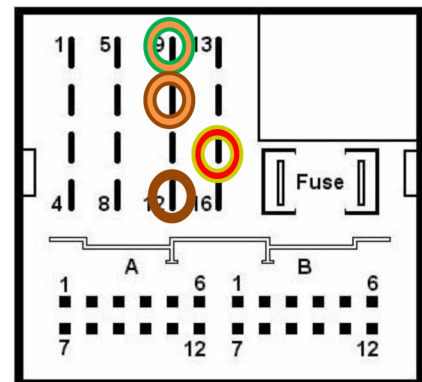
All vehicles Dip 1 ON, Dip 2 OFF, Dip 3 OFF



## 1.4. Pin-assignments

### Pin-assignment vehicle connector

Cable colour	Assignment
● Red/Yellow	+12Volt Permanent Pin 15
● Brown	Ground Pin 12
● Orange/Green	CAN HIGH Pin 9
● Orange/Brown	CAN LOW Pin 10



### Pin-assignment of the interface (Molex 8pin)

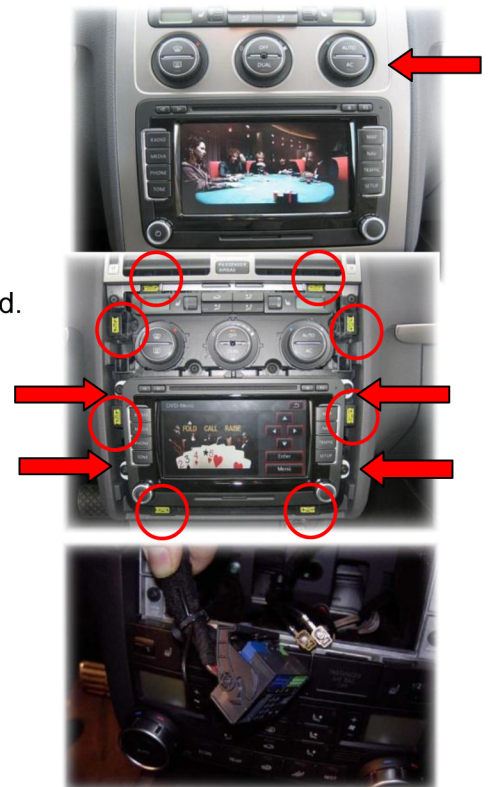
Cable colour	Assignment
● Red	+12Volt Permanent Pin 4
● Black	Ground Pin 8
● Yellow	CAN HIGH Navi Pin 1
● Blue	CAN LOW Navi Pin 2
● Yellow/Black	CAN High Vehicle Pin 5
● Blue/Black	CAN Low Vehicle Pin 6

## 2. Installation

**Switch off ignition and disconnect the vehicle's battery! If according to factory rules disconnecting the battery has to be avoided, it is usually sufficient to put the vehicle in sleep-mode. In case the sleep-mode does not show success, disconnect the battery with a resistor lead.**

### Instruction for VW Golf 5, Touran with MFD3/RNS510:

1. Remove decorative plastic panels of the navigation computer carefully, remove the 4 TORX screws and pull the navigation computer out of the centre console with the accordant tool kit (not included).
2. Disconnect Quadlock connector from the backside of the navigation computer and connect it to harness supplied. If the original Quadlock connector carries 12pin inserts, disconnect the inserts and connect them to harness supplied. Connect interface to the navigation computer.



## 3. Activation of the video-in-motion function

The video-in-motion function is activated permanently without disturbing the navigation performance.

## 4. Specifications

Operation voltage	10.5 – 14.8V
Stand-by power drain	>1mA
Operation power drain	~60mA
Power consumption	~0,72W
Temperature range	-30°C to +80°C
Weight	44g
Measurements (box only) B x H x T	70 x 20 x 47 mm

