



...connecting to the aftermarket

CT23IV05

Iveco Double DIN Fitting Kit



Vehicle Application

Iveco Daily 2014>

Key Features

- **Allows Double DIN Stereo Installation**
- **Provided with Metal Cage for Secure Stereo Installation**
- **High Quality Finish**

Recommended Tools

(Not Included)

- **Panel Removal Tool**
- **Screwdriver**
- **Stereo Release Keys**

(Connects2 Part Number: CT22UV01)

www.connects2.com

**Designed and
Engineered
in the UK.**



The information provided in this document is subject to change without notice due to changes and/or improvements to the product/s.

ABOUT THIS PRODUCT...

CT23IV05

Double DIN Fitting Kit for Iveco Daily 2014> Vehicles

PRIOR TO INSTALLATION

*Read the manual prior to installation. Technical knowledge is necessary for installation. The place of installation must be free of moisture and away from heat sources. Please ensure that the correct tools are using during the installation to avoid damage to the vehicle or product. **Connects2 can not be held responsible for the installation of this product.***

NB: Dash modification will be required when installing this kit in order to make space for the aftermarket stereo. Some plastic parts behind the dashboard will need to be removed. This modification will not affect the aesthetics or the running of the vehicle. Please see Step 8 for full details and images.

TECHNICAL SUPPORT

Connects2 Ltd. want to provide a fast and suitable resolution to any problems encountered during installation of this product. To get in touch with our dedicated technical support team, please fill in a ticket at support.connects2.com and provide as much information as possible.

FOLLOW US ON SOCIAL MEDIA

for all the latest updates



[/CONNECTS2](https://www.youtube.com/channel/UC...)
Watch us on
YouTube



[/CONNECTS2](https://www.facebook.com/CONNECTS2)
Like us on
facebook



[CONNECTS2LTD](https://www.instagram.com/CONNECTS2LTD)
Follow us on
instagram



[@CONNECTS2](https://twitter.com/CONNECTS2)
Follow us on
twitter



[CONNECTS2LTD](https://www.linkedin.com/company/CONNECTS2LTD)
Follow us on
linkedin



[CONNECTS2BLOG.COM](https://www.connects2.com/blog)
Follow our blog on
wordpress

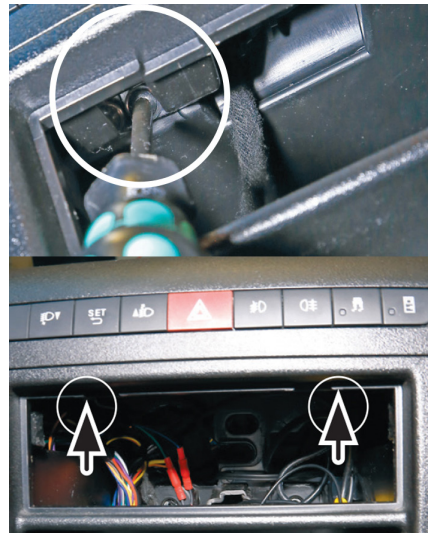
FITTING GUIDE...

NB: If the vehicle has no stereo installed, remove the pocket from the dashboard and progress to Step 4.

1. Use a set of CT22UV01 stereo release keys (not included) to remove the factory stereo
2. Pull out the factory stereo and disconnect all wiring
3. Remove the metal mounting cage from the stereo trim panel
4. Remove the anti-slip mat using a panel removal tool

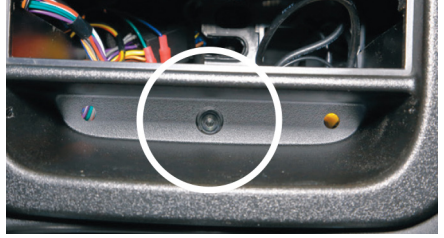


5. Remove the two screws at the top of the stereo trim panel



FITTING GUIDE...

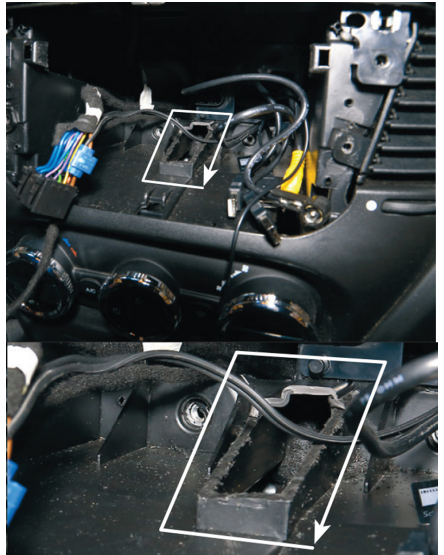
6. Remove the single screw from behind where the anti-slip mat was situated.



7. Remove the stereo panel from the dashboard

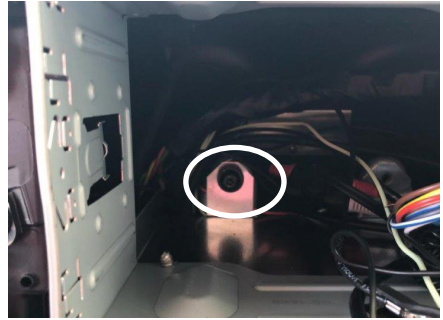
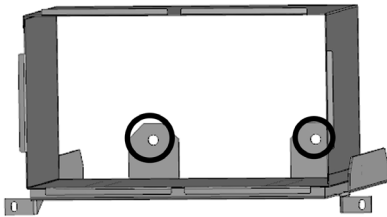


8. Cut the plastic section shown in the image to make room for the new stereo.

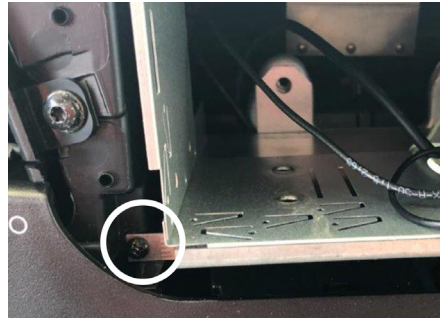
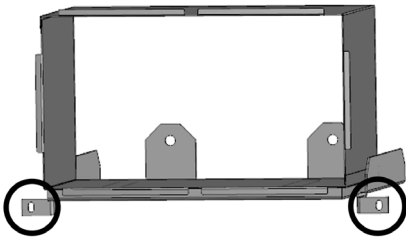


FITTING GUIDE...

9. Push the mounting cage into the dashboard, making sure wiring connections have been routed through and are accessible from the front. Screw the cage into place at the two back locations as shown in the image



10. Screw the cage into the dashboard at the two front locations as shown in the image



11. Make wiring connections to the new stereo and push it into the mounting cage until secure.

Surround the stereo with the new trim panel to complete the installation



NOTES

NOTES



...connecting to the aftermarket