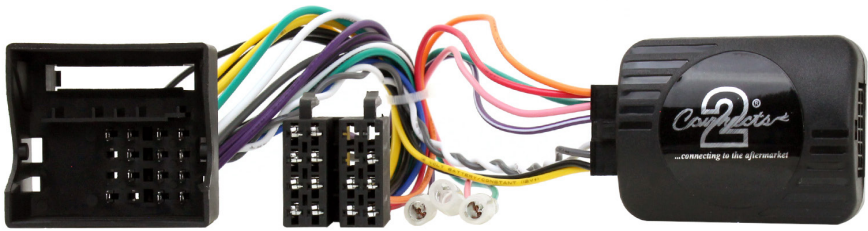




...connecting to the aftermarket

## CTSPG007.2

### Peugeot Steering Wheel Control Interface



#### Vehicle Application

Peugeot 3008 2009>  
Peugeot 807 2005 - 2014  
Peugeot 407 2004 - 2010  
Peugeot 207 2006 - 2012  
Peugeot 308 2007>  
Peugeot 307 2005 - 2008

Peugeot 607 2005 - 2012  
Peugeot 208 2012>  
Peugeot 5008 2009 - 2013  
Peugeot RCZ\* 2010>  
Peugeot Partner 2008>

\*Not Compatible with JBL Amplified Systems

#### Key Features

- Retains Steering Wheel Controls
- Retains Vehicle Settings Menu
- Provides Speed Pulse, Park Brake & Reverse Gear Outputs

[www.connects2.com](http://www.connects2.com)

Designed and  
Engineered  
in the UK. 

The information provided in this document is subject to change without notice due to manufacturer changes and/or improvements to the product/s.

## ABOUT THIS PRODUCT

---

### CTSPG007.2

CAN-Bus Steering Wheel Control Interface for select Peugeot vehicles with Blaupunkt/Siemens VDO RD4 original stereo and Quadlock connector.

### WIRING COLOUR CODES

---

Purple	Right Rear Speaker +	Yellow	Permanent 12V
Purple/Black	Right Rear Speaker -	Black	Ground
Green	Left Rear Speaker +	Red	Ignition 12V
Green/Black	Left Rear Speaker -	Pink	Speed Pulse
Grey	Right Front Speaker +	Green	Park Brake
Grey/Black	Right Front Speaker -	Purple/White	Reverse Gear
White	Left Front Speaker +		
White/Black	Left Front Speaker -		

### PRIOR TO INSTALLATION

---

*Read the manual prior to installation. Technical knowledge is necessary for installation. The place of installation must be free of moisture and away from heat sources. Please ensure that the correct tools are using during the installation to avoid damage to the vehicle or product. **Connects2 can not be held responsible for the installation of this product.***

### TECHNICAL SUPPORT

---

Connects2 Ltd. want to provide a fast and suitable resolution to any problems encountered during installation of this product. To get in touch with our dedicated technical support team, please fill in a ticket at [support.connects2.com](http://support.connects2.com) and provide as much information as possible.

---

## FOLLOW US ON SOCIAL MEDIA

for all the latest updates



[/CONNECTS2](https://www.youtube.com/channel/UC...)  
Watch us on  
YouTube



[/CONNECTS2](https://www.facebook.com/CONNECTS2)  
Like us on  
facebook



[CONNECTS2LTD](https://www.instagram.com/CONNECTS2LTD)  
Follow us on  
instagram



[@CONNECTS2](https://twitter.com/CONNECTS2)  
Follow us on  
twitter



[CONNECTS2LTD](https://www.linkedin.com/company/CONNECTS2LTD)  
Follow us on  
linkedin

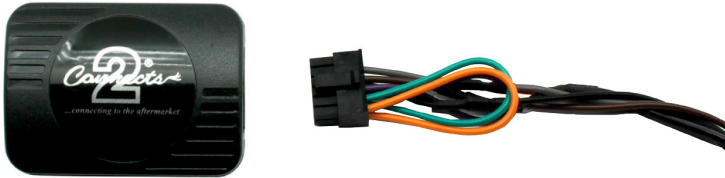


[CONNECTS2BLOG.COM](https://www.connects2.com/blog)  
Follow our blog on  
wordpress

## FITTING GUIDE

---

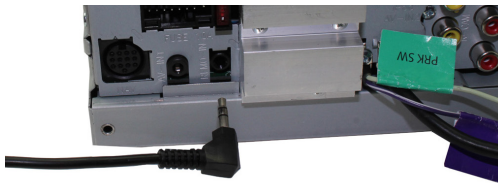
1. Remove and disconnect the original head unit.
2. Connect the 12 way molex connector of the head unit patch lead (supplied separately) to the interface.



3. Connect the opposite end of head unit patch lead to the head unit steering wheel control input on the back of the aftermarket head unit.

*NB: This may be a 3.5mm jack plug or a wire input depending upon the head unit brand being fitted. Please see the head unit installation manual for further information on where to connect.*

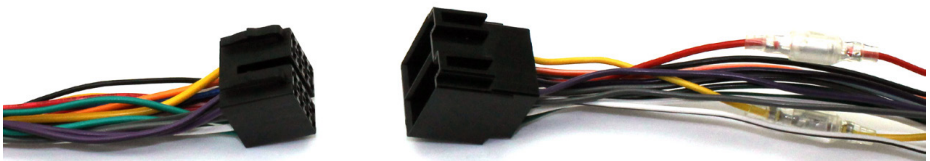
**Important: This step must be completed before connecting power to the interface. Failure to so do may result in no steering wheel control function.**



4. Connect the 14 way molex connector to the interface



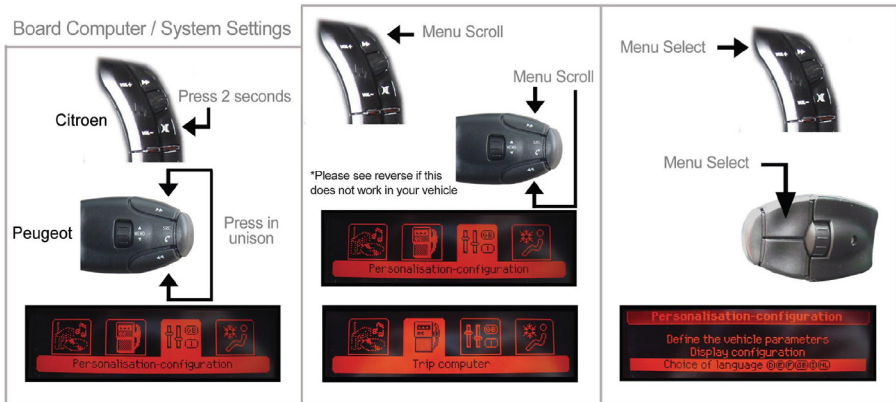
5. Connect the male power/speaker ISO harness to the female power/speaker ISO harness from the aftermarket head unit. For aftermarket head units without an ISO connector, please refer to "Wiring Colour Codes" on Pg. 2.



## FITTING GUIDE

6. Connect the female vehicle specific connectors on the harness to the male vehicle connector from the vehicle. Test head unit for correct operation.

## STEERING WHEEL CONTROL FUNCTIONALITY



### Peugeot

New MENU Navigation



### Citroen

New MENU Navigation



If the vehicle you have won't let you change the selected item, please follow the steps below:

1. Once in Menu Mode, hold the Source button for 3 Seconds
2. After 3 seconds, the display will return to radio mode
- 3 Use the roll wheel to change the value of the selected item

**NB: Once power to the vehicle has been switched off, it will return to its default settings**

